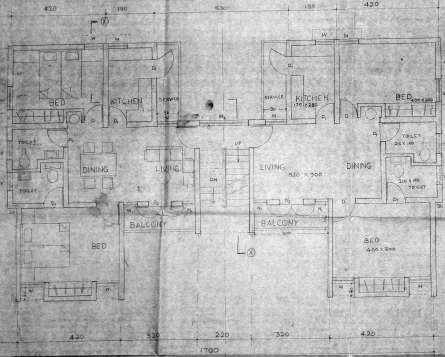


SCHEDULE **MINISTRY**

B	SINGLE SHAVEN DOOR	80 X 200
D	SINGLE SHAVEN DOOR	70 X 200
D ₂	DOUBLE SHAVEN DOOR	100 X 200
W	WINDOW	20 X 100
M	WINDOW	200 X 140
M ₂	WINDOW	200 X 120
V	VENTILATOR	50 X 40

Office Copy

APPROVED
 Subject to the conditions of the
 Office Lr. No. 21 (1534) 22
 P.P.D. No. 106
 L.D.O.
 FOR MEMBERS OF THE
 FEDERAL INTER-CASTE
 BOARD



HALF GROUND FLOOR PLAN

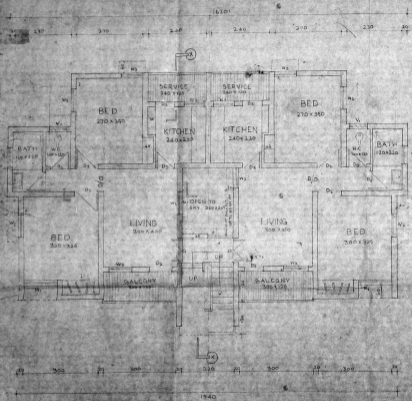
HALF UPPER FLOOR PLAN

TYPE B,
 PROPOSED HOUSING
 SCHEME FOR TNHB
 IN MOGAPPAR
 DIVISION
 IN SF NO. 102/2000/2000/2000/2000
 MOGAPPAR VILLAGE
 SAIDAPET TALUK
 CHENGLEPUT DISTRICT

SCALE: 1/80 DATE: 11-04-98

True Copy

D. DOUBLE SHUTTER DOOR	1059 x 200
D. DOUBLE SHUTTER DOOR	900 x 200
D. SINGLE SHUTTER DOOR	750 x 200
D.D.S DOOR OPENING	800 x 200
W.S. WINDOW	1500 x 1000
W.S. WINDOW	900 x 1100
W.S. VENTILATOR	750 x 400
W.S. WINDOW	500 x 1000



office copy

APPROVED
 Subject to the conditions of the
 Order of the Government of Madras
 No. 101 of 1954
 P.E.D. No. 11/06/55
 L-000
 For Member Secretary
 Madras State Housing Corporation



SLINTH AREA - 14.74 m²

CHIEF ENGINEER

TYPE C (G+2 STOREYS)

PROPOSED HOUSING
 SCHEME FOR THE
 IN MOCAPPAIR
 DIVISION
 IN S.P. NO. 243/1954 (MOCAPPAIR) IN
 MOCAPPAIR VILLAGE
 SAIDAPET TALUK
 CHENGLEPUT DISTRICT

/ TRUE COPY /

HALF GROUND FLOOR PLAN

HALF UPPER FLOOR'S PLAN
 (FIRST & SECOND STOREY)

PLAN

SCALE 1/50

DATE

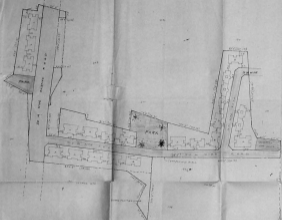
A. MO. HARRIS
 CONSULTANCY GROUP
 559 ANNA UNIVERSITY
 MADRAS

DESIGNED BY

CHECKED BY

S. M. S. S. S.
 SUPERINTENDING OFFICER

W. S. S. S.
 EXECUTIVE ENGINEER (ADO)
 S.C.T.



TOTAL EXTENT : 25672 M²
 NR OF BLOCKS:-
 A - TYPE = 11
 B - TYPE = 7
 C - TYPE = 5

1. Generating Sheet
 PAGE 47

TAMILNADU HOUSING
 MOSAPPUR DIVISION ANNA NAGAR,
 SCALE : 1:800

BOARD SPECIAL DIVISION - I.
 WESTERN EXTENSION, MADRAS.

PPD
 C.O. 60

101.50
 92

FOR APPROVAL BY THE
 BOARD



FOR MEMORandum
 PUBLIC AUTHORITY
 SUPERVISORY AUTHORITY

